

---

## Kenneth Young Center Child & Adolescent Services

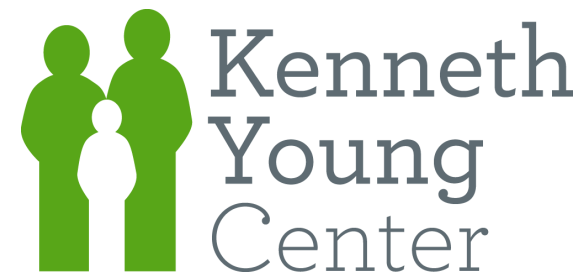
- Individual/Family Therapy
- Early Childhood Services
- Transitioning Youth Services
- Psychiatric Services
- SASS Crisis Services
- Individual Care Grant Support
- Case Management
- Mentoring
- Substance Abuse Counseling
- Group Therapy
- Parenting Services
- Prevention Services

---

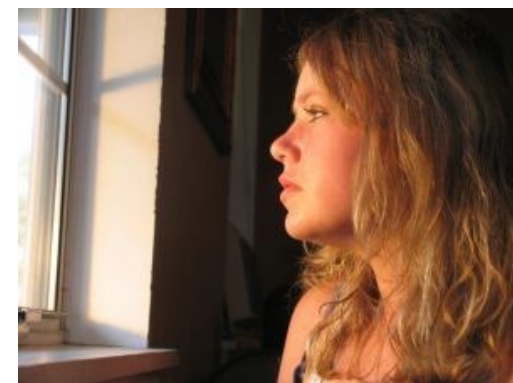
For general questions about these services, contact Intake at

847-524-8800 x 136

Elk Grove Location  
1001 Rohlwing Road  
Elk Grove Village, IL 60007  
Phone: 847-524-8800  
Fax: 847-524-8824



## **SASS: Screening Assessment & Support Services**



---

Stabilizing children and adolescents in crisis and providing support to them and their families

[www.kennethyoung.org](http://www.kennethyoung.org)

## ***What is SASS?***

Screening, Assessment and Support Services (SASS) provides intensive mental health services for children and adolescents who may need hospitalization for mental health care.

Any child or adolescent in a mental health crisis who may need public funding through All Kids or Medicaid may receive SASS services. If a child has no funding for mental health services they are eligible for SASS but their parent or guardian will be expected to apply for All Kids after the crisis is dealt with.

SASS is a collaborative effort between the Illinois Department of Children and Family Services, Health and Family Service (public aid) and Illinois Department of Human Services Department of Mental Health and Kenneth Young.

Kenneth Young Center SASS covers Hanover, Schaumburg, Elk Grove and Maine Townships. This includes all or part of Elgin, Hanover Park, Streamwood, Bartlett, Hoffman Estates, Roselle, Schaumburg, Rolling Meadows, Elk Grove Village, Des Plaines, Mount Prospect, Park Ridge, Niles, Morton Grove and Glenview.

## ***How do I contact SASS?***

To initiate SASS services, call the CARES hotline (cares stands for Crisis and Referral Entry Services). Cares will gather information to make sure the child in question is eligible for and in need of SASS services.

Next, CARES will page the on-call worker. The on call worker will call you and develop a timeframe for when they will be out to do an assessment. SASS assessments occur face to face and are never completed over the phone.

Anyone can call the CARES hotline, however, the child's parent should be present at the time of the face to face assessment so that they can be involved in any treatment decisions that need to be made.

Every part of the state has a SASS provider. If you are not sure who your provider is, the CARES line will help you.

***To contact CARES  
Call:  
1-800-345-9049***

## ***What services does SASS provide?***

The goal of SASS is to provide stabilization and support services in the least restrictive environments. This may mean a inpatient stay at a local hospital, a referral to a day program at a hospital, on intensive services provided to a child and their family in the community. Services provided include:

- Crisis Intake and Assessment
- Psychiatric evaluation
- Medication Monitoring
- 24 hour crisis Intervention
- Case Management/Coordination
- School Advocacy
- Community Advocacy
- Counseling
- Individual Care Grant Facilitation
- Hospital Services
- Connection to other outpatient services (see back)